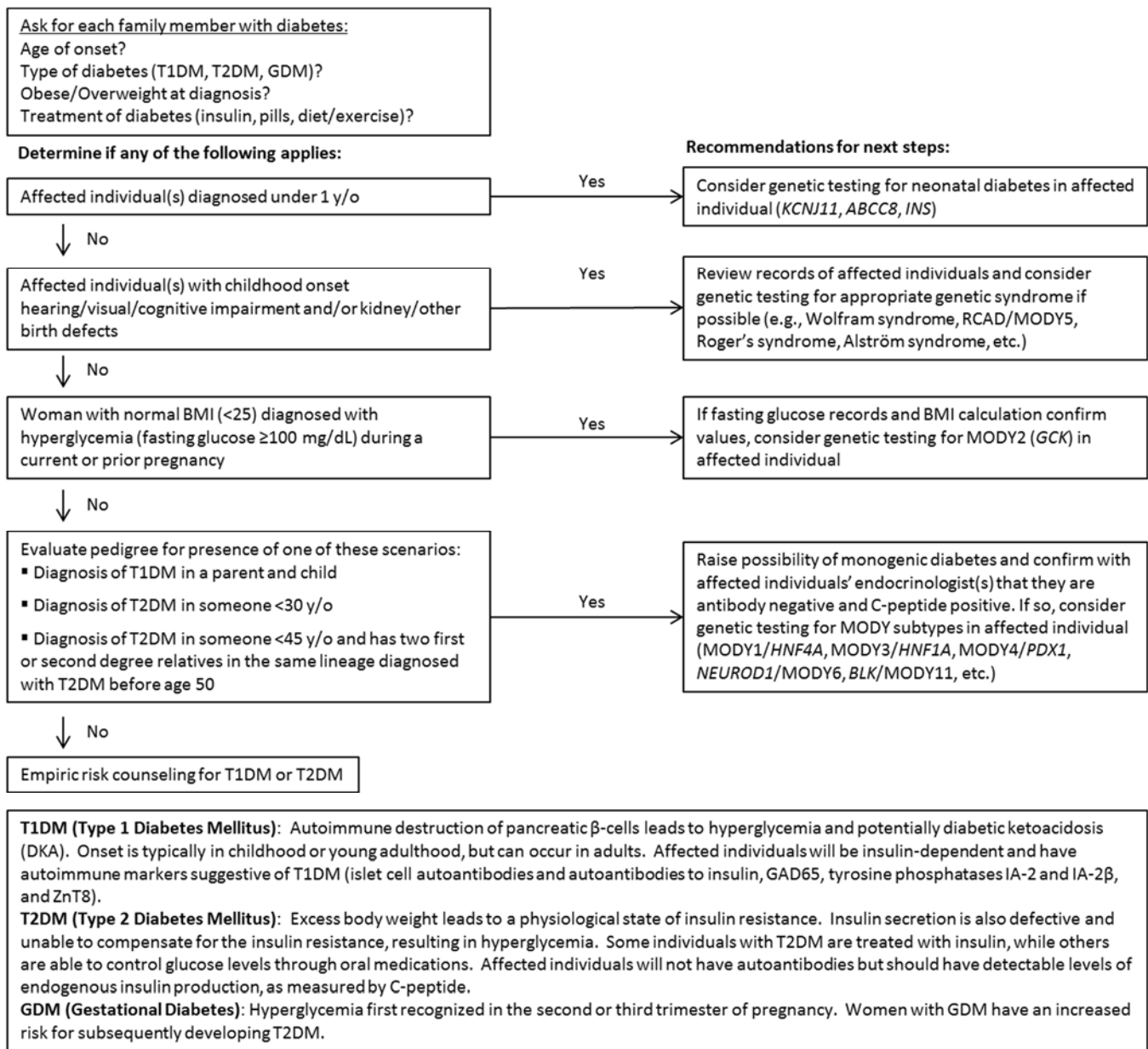


Pedigree assessment tool for monogenic diabetes



The pedigree assessment tool is based on the algorithm we previously proposed for utilizing patient clinical symptoms, family history, and teamwork among providers to guide genetic testing for specific forms of MDM (Stein, Maloney et al. 2014). It has been modified to include new proposed criteria for testing for a type of MDM that is often first identified in pregnancy called MODY2 (Chakera, Spyer et al. 2014; Chakera, Steele et al. 2015) along with names of specific genes that cause MDM and genetic syndromes associated with diabetes (Rubio-Cabezas, Hattersley et al. 2014; Stein, Maloney et al. 2014).